

# MJF/MJL series (Grade)-15~(Grade)-900

## HIGH EFFICIENCY COMPRESSED AIR FILTER



### Features:

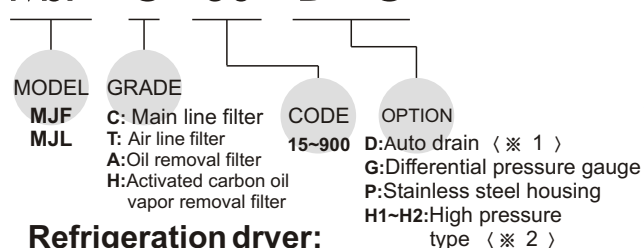
- The top quality filter element originally manufactured by Domnick Hunter. Totally interchangeable with Hankison filter elements in sizes.
- Optional (external/internal auto drain valves, differential pressure gauge) available.
- Capacity 50% larger. 5-year life time guaranteed.

### Filtration (Grades)

<b>C</b> Main line filter	Use as a separator to handle heavy liquid load from the after cooler. Also provides 3 micron filtration and a maximum remaining oil aerosol content of 5 ppm w/w.
<b>T</b> Air line filter	For the removal of particles down to 1 micron including coalesced liquid water and oil, providing a maximum remaining oil aerosol content of 0.5 ppm w/w. A. Use as a prefilter ahead of desiccant and membrane dryers. ① On systems supplied by oil-lubricated systems, use to remove liquid water (if present) and protect the Oil Removal Filter from gross contamination. ② On oil-free systems, use alone to protect dryer from liquid and solid contaminants. B. Use as an after filter with desiccant dryers to collect desiccant fines.
<b>A</b> Oil removal filter	For the removal of particles down to 0.01 micron including water and oil aerosols, providing a maximum remaining oil aerosol content of 0.001 ppm w/w (precede with Grade T filter). A. Use as a prefilter ahead of desiccant and membrane dryers on systems supplied by lubricated compressors to remove oil aerosols. B. Use as an after filter downstream of refrigerated dryers to remove liquid oil aerosols. (Downstream is the preferred location because of the additional aerosols formed in the dryer).
<b>H</b> Activated carbon oil vapor removal filter	Use to remove oil vapor and hydrocarbon odor down to 0.01 micron and give a maximum remaining oil content of 0.003 ppm w/w (precede with Grade A filter).

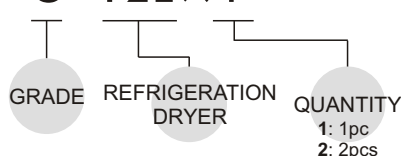
### Order example:

**MJF - C - 60 - D - G**



### Refrigeration dryer:

**C - F2E x 1**



### Specification:

Series	Filter model	Max. capacity	Connection (inch)	Dimension (mm)		Weight (kg)	Element model × Q'ty	for Refrigeration dryer models
				Diameter	Length			
MJF Series	(Grade)-15	2.4	1"PT	105	315	1.3	F1E × 1	08 · 15
	(Grade)-40	5.5	1-1/2"PT	138	425	1.4	F2E × 1	15 · 25 · 40
	(Grade)-60	8.1	1-1/2"PT	138	645	3.3	F3E × 1	40 · 60
Standard ports	(Grade)-100	15	2"PT	147	680	4.2	F4E × 1	75 · 100
	(Grade)-150	25	2-1/2"PT	150	855	8.2	L1E × 1	100 · 120 · 150 · 175
MJL Series	(Grade)-150	25	3"FL	350	1000	45	L1E × 1	125 · 150 · 175
	(Grade)-350	50	4"FL	450	1100	70	L1E × 2	200 · 250 · 300 · 350
	(Grade)-500	75	5"FL	550	1200	110	L1E × 3	400 · 500 · 600
Flange	(Grade)-700	100	6"FL	580	1200	150	L1E × 4	600 · 700
	(Grade)-900	125	6"FL	600	1300	210	L1E × 5	800 · 900

- Conditions :
- Max. pressure drop: 0.007MPa (@0.7MPa).
  - Max. Working temp.: 66°C(Grade C/T/A) / 50°C(Grade H).
  - Max. operating pressure : MJF series 1.6 MPa(@0.7MPa), MJL series 1.0 MPa(@0.7MPa).

※1: External auto drain -D, Internal auto drain -D (for grade)-15 only ) .

※2: High pressure type ( for MJL Series only ) :  
 H1 (1.1~2.0 MPa), H2 (2.1~3.0 MPa), H3 (3.1~4.0 MPa), H4 (4.1~5.0 MPa).

- All filters are supplied with a maintenance sticker. It is important to change the filler elements every year or earlier if the gauge changes to red. Grade H activated carbon filter elements should be changed every 1000 hours or earlier if odor is detected.

# MJF Dimensions (Grade)-15~(Grade)-150

## HIGH EFFICIENCY COMPRESSED AIR FILTER

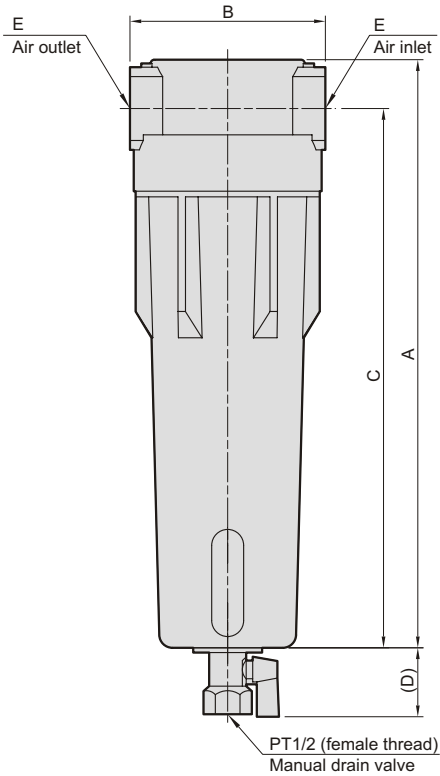


### Correction factor:

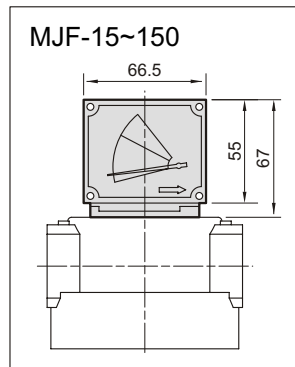
For model determination, multiply correction factor to working pressure other than 0.7MPa. Do not determine filter model by connection size.

Inlet pressure (MPa)	0.3	0.4	0.5	0.6	0.7	0.8	0.9	1.0	1.1	1.2	1.3	1.4	1.5	1.6
Correction factor	0.65	0.76	0.85	0.93	1.0	1.07	1.13	1.19	1.25	1.31	1.36	1.41	1.46	1.56

### MJF-40~150

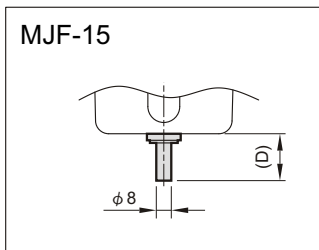
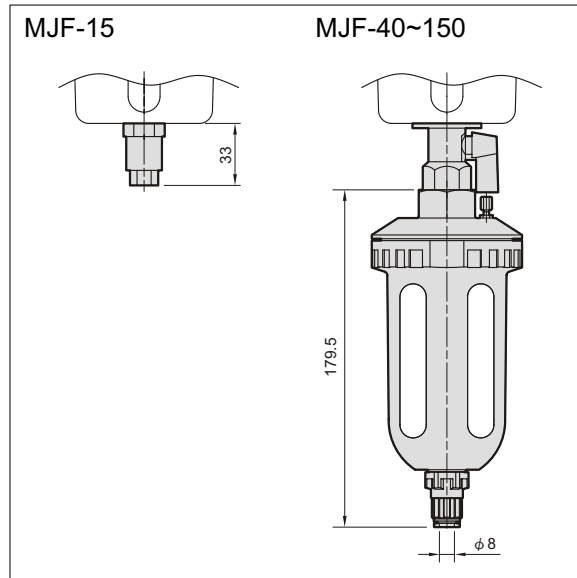


### Differential pressure gauge (Code-G)

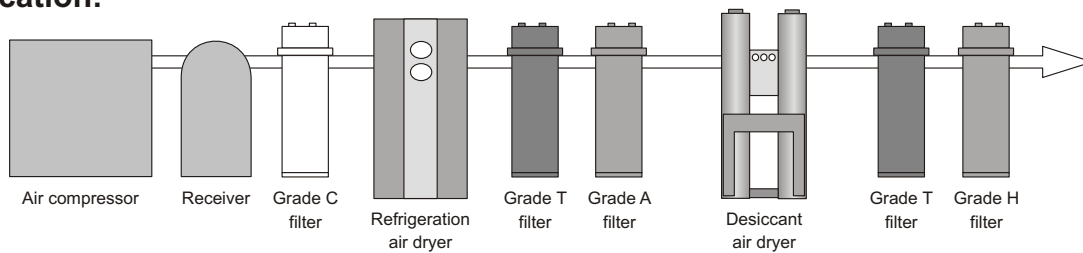


Code Model	A	B	C	D	E
MJF-15	315	105	290	25	1"PT
MJF-40	424	138	385	45	1-1/2"PT
MJF-60	624	138	585	45	1-1/2"PT
MJF-100	680	148	640	55	2"PT
MJF-150	855	150	800	55	2-1/2"PT

### Auto drain (Code-D)



### Application:



- Grade T filters after desiccant air dryer is for particulate removal. Must be installed reversely and auto drain is unnecessary.
- Grade H filters is for oil vapor and odor removal. Auto drain and differential pressure gauge not required.