

**MINI-SIZE**  
IEC 651 TYPE II  
3 RANGES 32- 130 dB  
A AND C WEIGHTING  
0-1V ANALOG OUTPUT

**MONARCH 325**

50 dB Dynamic Range.  
Fast and Slow time weighting.  
Max and Min.



Order P/N 7805-0103

Model 325 includes: Meter, Windscreen and Calibration Screwdriver.

SPECIFICATIONS	MODEL 325
Level Range	Lo = 32-80 dB Med = 50-100 dB Hi = 80-130 dB
Frequency Range	31.5 Hz to 8 kHz
Dynamic Range	50 dB
Accuracy	± 1.5 dB (ref 94 dB @ 1kHz)
Display	4 digit LCD
Frequency Weighting	A, C
Time Weighting	Fast, Slow
Microphone	1/2" Electret condenser
Auxiliary Outputs	AC output
Power	9V Battery
Battery Life	60 hours (with alkaline battery)
Operating Condition	-23 to 104 °F (0°C to 40 °C) <90%RH
Dimensions	9.1 x 2.1 x 1.3" (231 x 53 x 33 mm)
Weight	approx. 5.78 oz (180 g)

**4 DIGIT DISPLAY WITH BARGRAPH**  
IEC 651 TYPE II  
AUTORANGING OR SELECTED RANGES  
RS-232 INTERFACE

**MONARCH 321**

100 dB Dynamic Range in Autorange Mode.  
50 dB Dynamic Range in selected ranges.  
AC/DC outputs.



Order P/N 7805-0101

Model 321 includes: Meter, Windscreen and Carrying Case. SE-322 Software and RS-232 cable are optional.

SPECIFICATIONS	MODEL 321
Level Range	Lo = 30-80 dB Med = 50-100 dB Hi = 80-130 dB
Frequency Range	31.5 Hz to 8 kHz
Dynamic Range	50 dB (100 dB in Autorange Mode)
Accuracy	± 1.5 dB (ref 94 dB @ 1 kHz)
Display	4 digit LCD with Bargraph
Frequency Weighting	A, C
Time Weighting	Fast, Slow
Microphone	1/2" Electret condenser
Auxiliary Outputs	AC/DC outputs
Power	9V Battery
Battery Life	50 hours (with alkaline battery)
Operating Condition	-23 to 104 °F (0°C to 40 °C) <90%RH
Dimensions	10.8 x 2.5 x 1.2" (274 x 63 x 30 mm)
Weight	approx. 5.78 oz (180 g)
RS-232 Interface	Cable and Windows Software Optional

**32,000 RECORD DATALOGGER**  
IEC 651 TYPE II  
4 DIGIT DISPLAY WITH BAR GRAPH  
RS-232 INTERFACE  
WINDOWS SOFTWARE

**MONARCH 322**

Most complete Sound Level Meter.



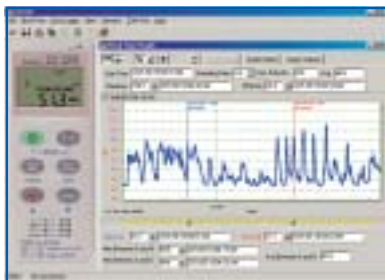
Order P/N 7805-0102

Model 322 includes: Meter, Windscreen, RS-232 Cable, Carrying Case, Screwdriver and Windows SE-322 Software.

SPECIFICATIONS	MODEL 322
Level Range	Lo = 30-80 dB Med = 50-100 dB Hi = 80-130 dB
Frequency Range	31.5 Hz to 8 kHz
Dynamic Range	50 dB (100 dB in Autorange Mode)
Accuracy	± 1.5 dB (ref 94 dB @ 1 kHz)
Display	4 digit LCD with Bargraph
Frequency Weighting	A, C
Time Weighting	Fast, Slow
Microphone	1/2" Electret condenser
Auxiliary Outputs	AC/DC outputs
Power	9V Battery
Battery Life	50 hours (with alkaline battery)
Operating Condition	-23 to 104 °F (0°C to 40 °C) <90%RH
Dimensions	10.8 x 2.5 x 1.2" (274 x 63 x 30 mm)
Weight	approx. 5.78 oz (180 g)
RS-232 Interface	Cable and Windows Software included
Datalogging	32,000 records

**WINDOWS SOFTWARE**  
REAL-TIME CONTROL VIA RS-232  
RECORD, SAVE AND EXPORT TO EXCEL

**SE 322**



Order P/N 7805-0151

SE-322 includes: Software on CD and RS-232 Cable.

**SOUND LEVEL CALIBRATOR**

**MONARCH 1356**



Simple to use.  
Perform 1 kHz Calibration.  
Conforms to:  
ANSI S1.4-1984  
IEC 942-1988 CLASS II.



Two calibration levels, 94 and 114 dB.  
Fits 1, 1/2 and 1/4" microphones.  
9V alkaline battery included.

SPECIFICATIONS	MODEL 1356
Accuracy	± 0.5 dB (ref 94 dB @ 1kHz)
Output SPL	94 dB and 114 dB under reference conditions
Output Frequency	1 kHz ±4%
Reference Conditions	Temp. 68°F (20 °C) , RH 65%, Atmospheric Pressure 1013mbar
Power	9V Battery
Battery Life	60 hours (with alkaline battery)
Operating Condition	-32 to 104 °F (0 to 40 °C) <90%RH
Dimensions	4.1 x 2.5 x 2.1" (104 x 63 x 53 mm)
Weight	approx. 6.2 oz (200 g)

Order P/N 7805-0251

Fits 1" , 1/2" and 1/4" microphones including all models on this page.  
Model 1356 includes: 9V Battery and Latching Case.